

# GOLDEN GATE PETROLEUM LTD ASX / MEDIA ANNOUNCEMENT

7 March 2013

## COMPANY INFORMATION

Golden Gate Petroleum Ltd  
ABN 34 090 074 785

## COMPANY DIRECTORS

Steve Graves – Executive  
Chairman  
Chris Porter - Director  
Rob Oliver - Director

## MANAGEMENT

Chris Ritchie – CFO / Co Sec

## STOCK EXCHANGE LISTING

Australian Stock Exchange  
ASX Code: GGP

Current Shares on Issue:  
3,018,875,305  
Market Capitalization as at 6  
March 2013 based on a share  
price of \$0.004  
AUD \$ 12.1 million

## CURRENT PROJECTS

Permian Basin  
Eagle Ford Shale  
Napoleonville  
Bowtie West  
North Edna  
Acadia  
Goliad

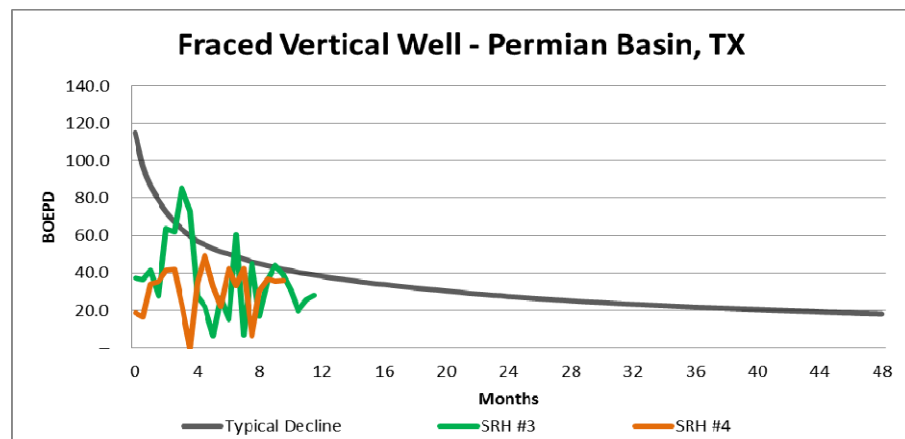
[www.ggpl.com.au](http://www.ggpl.com.au)

## Production and Drilling Report

Golden Gate Petroleum Limited (ASX: GGP) (“Golden Gate” or the “Company”) provides the following production and drilling update from the Company’s Projects for the two-week period, 16<sup>th</sup> to 28<sup>th</sup> February, 2013. A similar report will be provided every two weeks.

### Production Report

PROJECT	Avg. Daily Rate for Period (1) (BOE)	Production Total BOE for Period (1)	Cumulative Production BOE to Date
<b>- Well</b>			
<b>Permian</b>			
- SRH #1 (2)	-	-	3,407.3
- SRH #2 (2)	-	-	6,202.2
- SRH #3 (2)	28.1	364.8	13,813.4
- SRH #4 (2)	35.8	465.1	10,018.9
<b>Napoleonville</b>			
- Dugas LeBlanc #3 (3)	26.7	346.6	19,751.2
<b>Bowtie West</b>			
- Sugar Valley #1 (4)	13.5	175.1	1,131.2
<b>Total for Period and Cum. (BOE)</b>	<b>104.1</b>	<b>1,351.6</b>	<b>54,324.2</b>



Notes:

- (1) The period is from 16<sup>th</sup> to 28<sup>th</sup> February, 2013.
- (2) The SRH #3 and #4 wells have been on and off production for extended periods since completion in order to run various testing programs, to conduct new fracture stimulation, to isolate intervals and to change out production equipment. These figures are production volumes for oil, gas and gas liquids. Gas and gas liquids are sold as wet gas and priced accordingly. Approximately 80% of volumes are oil. Gas volumes are converted to BOE on a 10:1 mcf/BOE ratio in order to better correspond with comparable oil revenues.
- (3) These figures represent GGP's 15% working interest share of oil and dry gas production. Gas volumes are converted to BOE on a 20:1 mcf/BOE ratio in order to better correspond with comparable oil revenues. The ratio used is different from Texas projects since the gas produced does not possess as rich of a liquid content.
- (4) These figures represent GGP's 12% working interest share of oil and dry gas production. Gas volumes converted to BOE on a 10:1 mcf/BOE ratio in order to better correspond with comparable oil revenues.

## **Drilling and Completion Update**

### **(1) Permian Project, Texas** (GGP: Operator and 100% WI)

- SRH #1 Well: Shut in. Preparing capillary installation so as to start production from combined Cline and Wolfcamp intervals already fracture stimulated.
- SRH #2 Well: Shut in. Preparing capillary installation so as to start production from combined Cline and Wolfcamp intervals already fracture stimulated.
- SRH #3 Well: On production.
- SRH #4 Well: On Production.
- SRH #5 Horizontal Well: Drilling & cementing completed. Preparing for fracture stimulation.

### **(2) Cutlass Project, Texas** (Eagle Ford Shale Development, Dimmit & La Salle Counties)

- Cutlass West #A1 Well (GGP: 10% WI; Non-Operator): Plans for fracture stimulation in April 2013. A gas pipeline is in planning stages.
- Cutlass East #A 1 Well (GGP: 10% WI; Non-Operator): Well has been completed and being evaluated for testing intervals below Eagle Ford Shale where oil and gas shows have been recorded.

### **(3) Bowtie West Project, Project** (Matagorda County)

- Sugar Valley #1 Well (GGP: 12% WI; Non-Operator): On production.

### **(4) Napoleonville Project, Louisiana** (Assumption Parish)

- Napoleonville Hensarling #1 Well (GGP: 3.99% WI; Non-Operator): Electric logging operations have confirmed net pay of 31 feet of pay in the Cris R II sands and 49 feet in the Cris R III sands. Waiting on unit rule clarifications prior to testing.

### **(5) North Edna Project, Louisiana** (Jefferson Davis Parish)

- Walker Properties # 1 Well (GGP: 11.2% WI; Non-Operator): Well has reached TD and initial logging has been conducted. A wireline unit is currently on site.

**For and on behalf of the Board:**

Steve Graves  
Executive Chairman

**For further information contact:**

Chris Ritchie  
Chief Financial Officer  
Phone +61 3 9349 1488  
[investor.relations@ggpl.com.au](mailto:investor.relations@ggpl.com.au)

**About Golden Gate:** Golden Gate is an independent oil and gas exploration and production company listed on the Australian Securities Exchange. Its focus of operations is onshore Texas and Louisiana Gulf Coast region and the Permian Basin region of the USA.

**COMPETENT PERSONS STATEMENT:** The information in this report has been reviewed and signed off by Mr. George Placke, Petroleum Engineer, with over 30 years of experience within the oil and gas sector and an extended background in Texas and Louisiana.

This report contains forward looking statements that are subject to risk factors associated with resources businesses. It is believed that the expectations reflected in these statements are reasonable but they may be affected by a variety of variables and changes in underlying assumptions which could cause actual results or trends to differ materially, including but not limited to: price fluctuations, actual demand, currency fluctuations, drilling and production results, reserve estimates, loss of market, industry competition, environmental risks, physical risks, legislative, fiscal and regulatory developments, economic and financial market conditions in various countries and regions, political risks, project delay or advancement, approvals and cost estimates.